

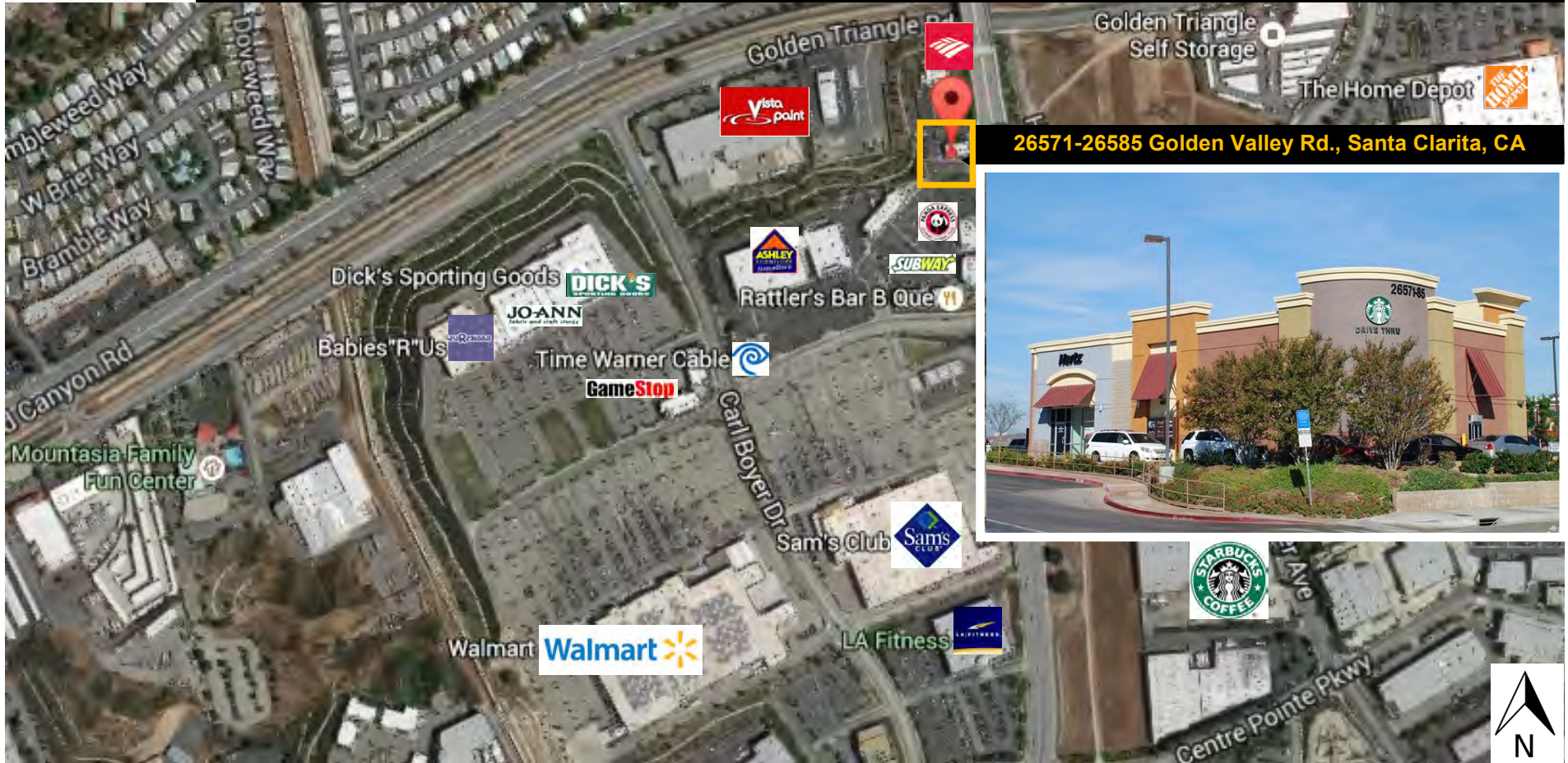


International, Inc.
BUSINESS
PROPERTIES

Centre Point Market Place

Retail Space for Lease

26571-26585 Golden Valley Road, Santa Clarita, CA 91350



26571-26585 Golden Valley Rd., Santa Clarita, CA

TENANTS:

- Hertz and Starbucks

For more information, please contact BP International, Inc.

Patsy Ma, MBA, CCIM, CRRP, CRX, CLS DRE# 00980137

patsyma@bpinternational.net

650 W. Duarte Rd., #1088, Arcadia, CA 91007

Tel: 626-821-3448 x 100 Fax: 626-821-9099

www.BPInternational.net

DEMOGRAPHICS

Source : CoStar (2018)

	1-MILE	3-MILE	5-MILE
Population	7,251	110,689	228,445
Average HH Income	\$89,287	\$103,589	\$111,260

The information contained herein has been obtained from sources that we deem reliable, or the owner of the property. We have no reason to doubt its accuracy, but we do not guarantee it.



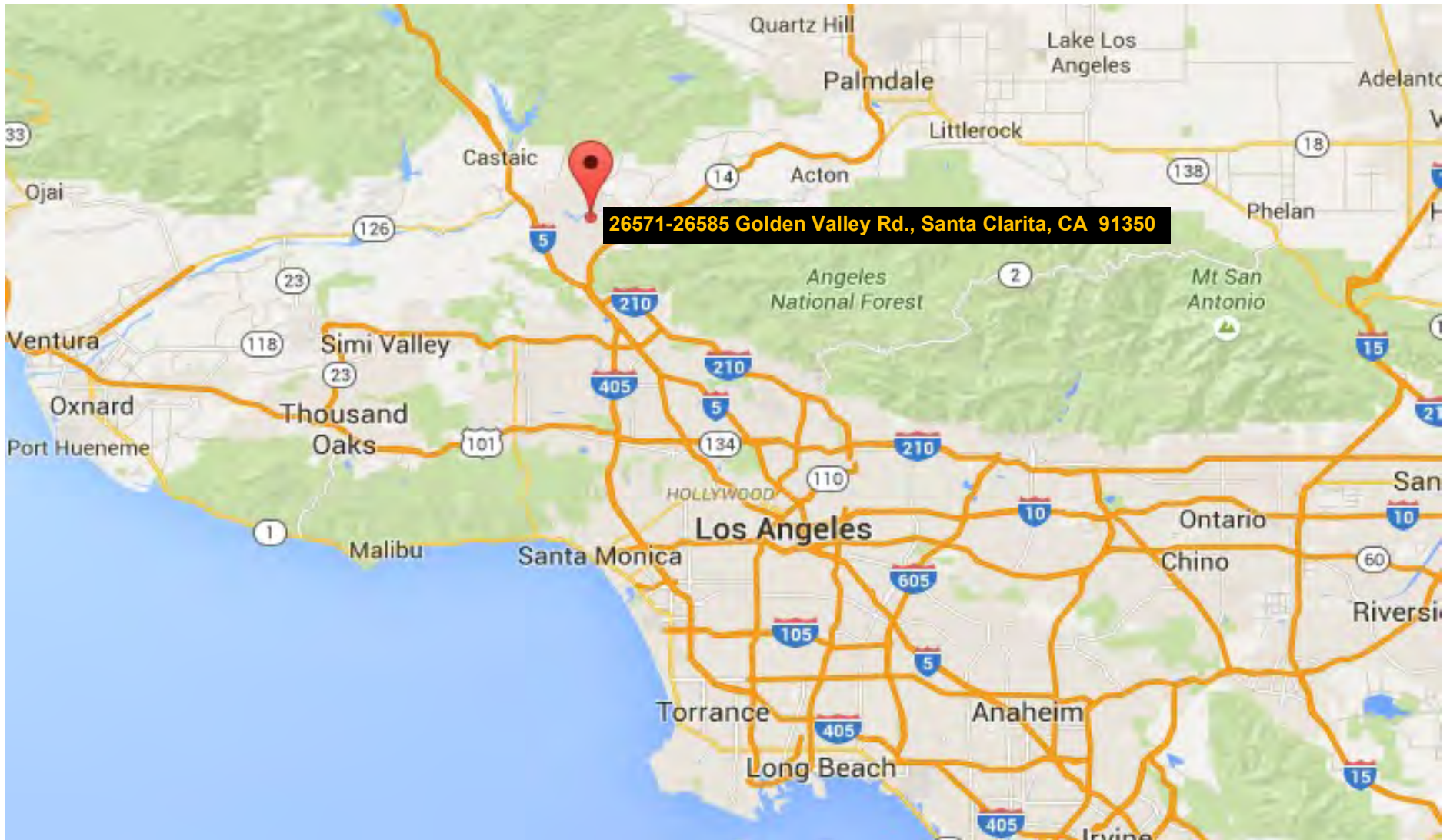
International, Inc.
BUSINESS
PROPERTIES

Centre Point Market Place

Retail Space for Lease

26571-26585 Golden Valley Road, Santa Clarita, CA 91350

Regional Map



The information contained herein has been obtained from sources that we deem reliable, or the owner of the property. We have no reason to doubt its accuracy, but we do not guarantee it.



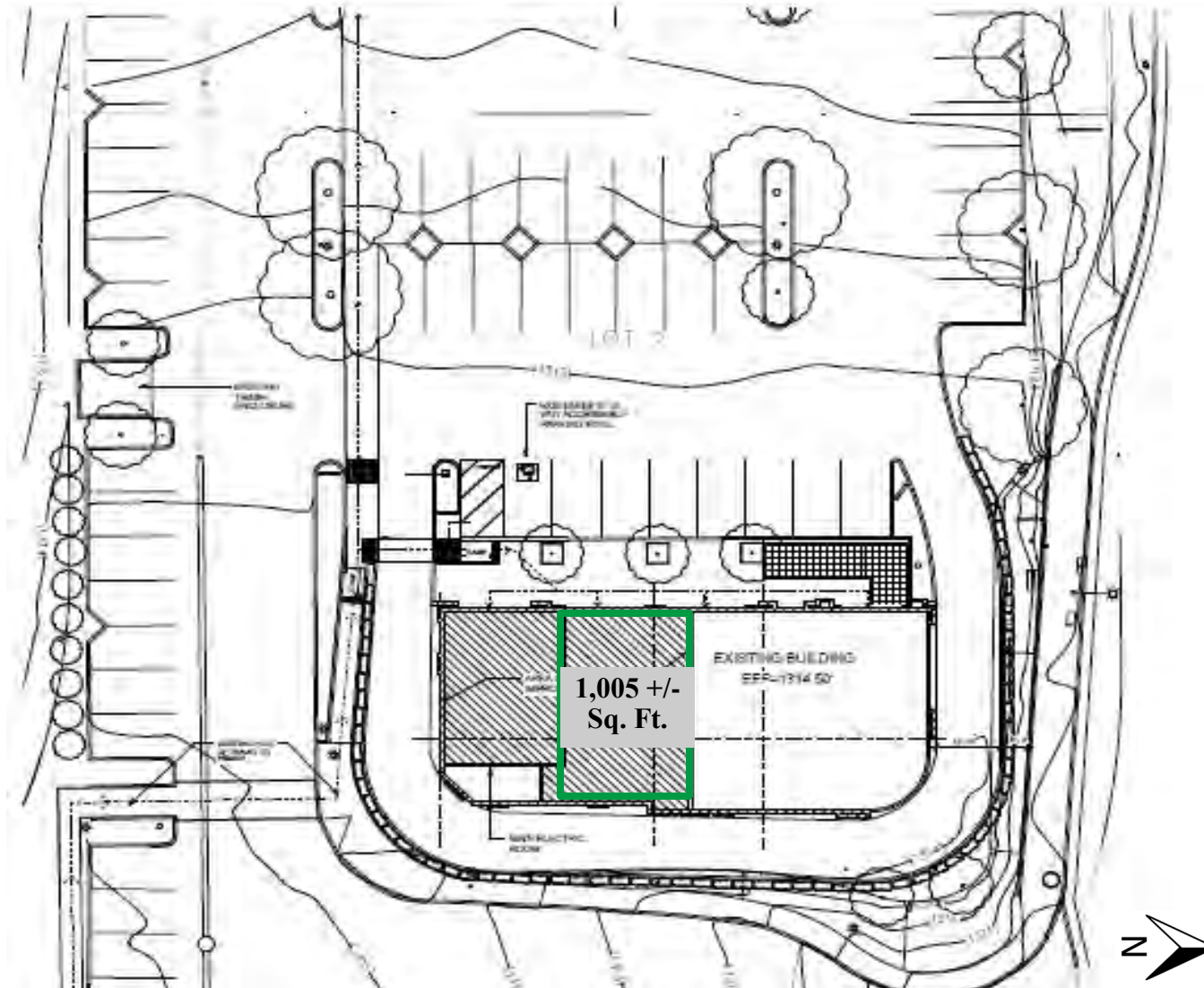
International, Inc.
BUSINESS
PROPERTIES

Centre Point Market Place

Retail Space for Lease

26571-26585 Golden Valley Road, Santa Clarita, CA 91350

Site Plan



The information contained herein has been obtained from sources that we deem reliable, or the owner of the property. We have no reason to doubt its accuracy, but we do not guarantee it.

Demographic Detail Report

Centre Pointe Marketplace

26571-26583 Golden Valley Rd, Santa Clarita, CA 91350

Building Type: **General Retail** Total Available: **1,005 SF**
 Secondary: **Restaurant** % Leased: **77.6%**
 GLA: **4,487 SF** Rent/SF/Yr: **\$16.25**
 Year Built: **2007**



Radius	1 Mile	3 Mile	5 Mile
Population			
2022 Projection	7,446	114,366	236,269
2017 Estimate	7,251	110,689	228,445
2010 Census	7,029	103,661	212,728
Growth 2017 - 2022	2.69%	3.32%	3.42%
Growth 2010 - 2017	3.16%	6.78%	7.39%
2017 Population by Age			
	7,251	110,689	228,445
Age 0 - 4	443 6.11%	6,900 6.23%	14,220 6.22%
Age 5 - 9	428 5.90%	6,853 6.19%	14,450 6.33%
Age 10 - 14	450 6.21%	7,234 6.54%	15,464 6.77%
Age 15 - 19	505 6.96%	7,900 7.14%	16,606 7.27%
Age 20 - 24	548 7.56%	8,443 7.63%	17,266 7.56%
Age 25 - 29	545 7.52%	8,390 7.58%	16,919 7.41%
Age 30 - 34	482 6.65%	7,402 6.69%	14,965 6.55%
Age 35 - 39	442 6.10%	7,019 6.34%	14,473 6.34%
Age 40 - 44	463 6.39%	7,438 6.72%	15,736 6.89%
Age 45 - 49	517 7.13%	8,051 7.27%	17,157 7.51%
Age 50 - 54	540 7.45%	8,231 7.44%	17,356 7.60%
Age 55 - 59	494 6.81%	7,595 6.86%	15,714 6.88%
Age 60 - 64	397 5.48%	6,159 5.56%	12,478 5.46%
Age 65 - 69	312 4.30%	4,644 4.20%	9,302 4.07%
Age 70 - 74	239 3.30%	3,191 2.88%	6,317 2.77%
Age 75 - 79	182 2.51%	2,181 1.97%	4,220 1.85%
Age 80 - 84	128 1.77%	1,463 1.32%	2,792 1.22%
Age 85+	137 1.89%	1,592 1.44%	3,009 1.32%
Age 65+	998 13.76%	13,071 11.81%	25,640 11.22%
Median Age	37.50	36.60	36.50
Average Age	38.10	37.00	36.80



The information contained herein has been obtained from sources that we deem reliable, or the owner of the property. We have no reason to doubt its accuracy, but we do not guarantee it. Copyrighted report licensed to BP International, Inc. - 854092.

5/2/2018

Demographic Detail Report

Centre Pointe Marketplace

26571-26583 Golden Valley Rd, Santa Clarita, CA 91350

Radius	1 Mile		3 Mile		5 Mile	
2017 Population By Race	7,251		110,689		228,445	
White	5,884	81.15%	89,639	80.98%	178,639	78.20%
Black	341	4.70%	4,535	4.10%	9,874	4.32%
Am. Indian & Alaskan	93	1.28%	1,288	1.16%	2,335	1.02%
Asian	623	8.59%	10,976	9.92%	28,597	12.52%
Hawaiian & Pacific Island	22	0.30%	290	0.26%	555	0.24%
Other	289	3.99%	3,959	3.58%	8,444	3.70%
Population by Hispanic Origin	7,251		110,689		228,445	
Non-Hispanic Origin	4,520	62.34%	73,537	66.44%	159,489	69.82%
Hispanic Origin	2,731	37.66%	37,152	33.56%	68,955	30.18%
2017 Median Age, Male	35.30		35.00		35.00	
2017 Average Age, Male	36.50		35.90		35.70	
2017 Median Age, Female	39.70		38.10		37.90	
2017 Average Age, Female	39.50		38.10		37.70	
2017 Population by Occupation Classification	5,830		88,129		180,995	
Civilian Employed	4,122	70.70%	58,239	66.08%	119,153	65.83%
Civilian Unemployed	199	3.41%	3,119	3.54%	6,189	3.42%
Civilian Non-Labor Force	1,509	25.88%	26,745	30.35%	55,567	30.70%
Armed Forces	0	0.00%	26	0.03%	86	0.05%
Households by Marital Status						
Married	1,248		20,779		43,989	
Married No Children	597		9,758		19,752	
Married w/Children	651		11,021		24,237	
2017 Population by Education	5,361		79,042		161,458	
Some High School, No Diploma	825	15.39%	8,736	11.05%	15,695	9.72%
High School Grad (Incl Equivalency)	1,211	22.59%	15,281	19.33%	27,865	17.26%
Some College, No Degree	1,673	31.21%	27,393	34.66%	54,670	33.86%
Associate Degree	484	9.03%	5,682	7.19%	11,020	6.83%
Bachelor Degree	832	15.52%	15,295	19.35%	35,302	21.86%
Advanced Degree	336	6.27%	6,655	8.42%	16,906	10.47%



The information contained herein has been obtained from sources that we deem reliable, or the owner of the property. We have no reason to doubt its accuracy, but we do not guarantee it. Copyrighted report licensed to BP International, Inc. - 854092.

5/2/2018

Demographic Detail Report

Centre Pointe Marketplace

26571-26583 Golden Valley Rd, Santa Clarita, CA 91350

Radius	1 Mile		3 Mile		5 Mile	
2017 Population by Occupation	7,744		109,195		223,619	
Real Estate & Finance	393	5.07%	4,270	3.91%	9,249	4.14%
Professional & Management	1,723	22.25%	28,894	26.46%	64,240	28.73%
Public Administration	92	1.19%	2,684	2.46%	5,951	2.66%
Education & Health	801	10.34%	12,507	11.45%	26,069	11.66%
Services	745	9.62%	10,071	9.22%	19,189	8.58%
Information	232	3.00%	3,223	2.95%	7,044	3.15%
Sales	1,329	17.16%	15,829	14.50%	30,853	13.80%
Transportation	180	2.32%	1,985	1.82%	3,522	1.58%
Retail	491	6.34%	5,892	5.40%	11,920	5.33%
Wholesale	85	1.10%	1,556	1.42%	3,148	1.41%
Manufacturing	495	6.39%	6,445	5.90%	12,788	5.72%
Production	536	6.92%	5,296	4.85%	9,693	4.33%
Construction	187	2.41%	4,190	3.84%	8,107	3.63%
Utilities	262	3.38%	3,015	2.76%	5,543	2.48%
Agriculture & Mining	0	0.00%	264	0.24%	361	0.16%
Farming, Fishing, Forestry	0	0.00%	42	0.04%	56	0.03%
Other Services	193	2.49%	3,032	2.78%	5,886	2.63%
2017 Worker Travel Time to Job	3,986		55,202		112,351	
<30 Minutes	2,257	56.62%	27,216	49.30%	53,733	47.83%
30-60 Minutes	1,084	27.20%	18,275	33.11%	38,109	33.92%
60+ Minutes	645	16.18%	9,711	17.59%	20,509	18.25%
2010 Households by HH Size	2,394		34,193		70,896	
1-Person Households	461	19.26%	6,359	18.60%	13,378	18.87%
2-Person Households	710	29.66%	9,373	27.41%	19,417	27.39%
3-Person Households	429	17.92%	6,354	18.58%	13,073	18.44%
4-Person Households	411	17.17%	6,577	19.23%	13,942	19.67%
5-Person Households	220	9.19%	3,132	9.16%	6,520	9.20%
6-Person Households	97	4.05%	1,352	3.95%	2,631	3.71%
7 or more Person Households	66	2.76%	1,046	3.06%	1,935	2.73%
2017 Average Household Size	3.00		3.00		3.00	
Households						
2022 Projection	2,491		37,570		78,547	
2017 Estimate	2,433		36,378		75,961	
2010 Census	2,396		34,194		70,895	
Growth 2017 - 2022	2.38%		3.28%		3.40%	
Growth 2010 - 2017	1.54%		6.39%		7.15%	



The information contained herein has been obtained from sources that we deem reliable, or the owner of the property. We have no reason to doubt its accuracy, but we do not guarantee it. Copyrighted report licensed to BP International, Inc. - 854092.

5/2/2018

Demographic Detail Report

Centre Pointe Marketplace

26571-26583 Golden Valley Rd, Santa Clarita, CA 91350

Radius	1 Mile	3 Mile	5 Mile
2017 Households by HH Income	2,433	36,379	75,963
<\$25,000	276 11.34%	3,857 10.60%	7,741 10.19%
\$25,000 - \$50,000	416 17.10%	5,807 15.96%	11,101 14.61%
\$50,000 - \$75,000	502 20.63%	5,920 16.27%	11,136 14.66%
\$75,000 - \$100,000	398 16.36%	5,884 16.17%	12,237 16.11%
\$100,000 - \$125,000	282 11.59%	4,655 12.80%	9,986 13.15%
\$125,000 - \$150,000	233 9.58%	3,420 9.40%	6,922 9.11%
\$150,000 - \$200,000	235 9.66%	3,734 10.26%	8,414 11.08%
\$200,000+	91 3.74%	3,102 8.53%	8,426 11.09%
2017 Avg Household Income	\$89,287	\$103,589	\$111,260
2017 Med Household Income	\$76,413	\$86,070	\$91,350
2017 Occupied Housing	2,433	36,378	75,961
Owner Occupied	1,808 74.31%	26,451 72.71%	52,455 69.06%
Renter Occupied	625 25.69%	9,927 27.29%	23,506 30.94%
2010 Housing Units	1,797	35,923	76,342
1 Unit	1,086 60.43%	26,888 74.85%	54,839 71.83%
2 - 4 Units	329 18.31%	2,205 6.14%	4,101 5.37%
5 - 19 Units	300 16.69%	4,594 12.79%	10,029 13.14%
20+ Units	82 4.56%	2,236 6.22%	7,373 9.66%
2017 Housing Value	1,810	26,450	52,454
<\$100,000	375 20.72%	1,371 5.18%	2,144 4.09%
\$100,000 - \$200,000	101 5.58%	1,078 4.08%	1,664 3.17%
\$200,000 - \$300,000	100 5.52%	2,482 9.38%	3,680 7.02%
\$300,000 - \$400,000	570 31.49%	7,167 27.10%	10,541 20.10%
\$400,000 - \$500,000	339 18.73%	7,163 27.08%	13,890 26.48%
\$500,000 - \$1,000,000	272 15.03%	6,525 24.67%	18,674 35.60%
\$1,000,000+	53 2.93%	664 2.51%	1,861 3.55%
2017 Median Home Value	\$357,719	\$415,733	\$459,020
2017 Housing Units by Yr Built	2,593	37,802	79,175
Built 2010+	67 2.58%	2,190 5.79%	5,013 6.33%
Built 2000 - 2010	241 9.29%	4,788 12.67%	18,536 23.41%
Built 1990 - 1999	608 23.45%	7,124 18.85%	14,732 18.61%
Built 1980 - 1989	961 37.06%	10,603 28.05%	18,873 23.84%
Built 1970 - 1979	337 13.00%	5,446 14.41%	10,114 12.77%
Built 1960 - 1969	355 13.69%	5,991 15.85%	8,971 11.33%
Built 1950 - 1959	11 0.42%	1,027 2.72%	1,799 2.27%
Built <1949	13 0.50%	633 1.67%	1,137 1.44%
2017 Median Year Built	1985	1984	1988



The information contained herein has been obtained from sources that we deem reliable, or the owner of the property. We have no reason to doubt its accuracy, but we do not guarantee it. Copyrighted report licensed to BP International, Inc. - 854092.

5/2/2018