



**International, Inc.**  
**BUSINESS**  
**PROPERTIES**

# RD CENTER

## FOR LEASE: NWC ROSEMEAD BLVD. & DUARTE RD

**Anchored by 7-Eleven**  
**6911 Rosemead Blvd, CA, 91775**



### FEATURES:

- Rosemead and Duarte Center is located North of the 10 Freeway and South of the 210 Freeway in the city of San Gabriel.
- Heavy Trafficked intersection, conveniently located on Rosemead Boulevard and Duarte Road.
- Anchored by 7-Eleven  
 1,853 +/- Sq. Ft. Space Available

DEMOGRAPHICS Source : CoStar	1-MILE	3-MILE	5-MILE
Population (2017)	31,020	190,064	599,126
Average HH Income (2017)	\$96,816	\$104,216	\$92,427

For more information, please contact

**BP International, Inc.**

**Patsy Ma, MBA, CCIM, CRX, CLS BRE# 00980137**

[patsy.ma@bpinternational.net](mailto:patsy.ma@bpinternational.net)

650 W. Duarte Rd., #1088, Arcadia, CA 91007

Tel: 626-821-3448 x 100 Fax: 626-821-9099

[www.BPInternational.net](http://www.BPInternational.net)

The information contained herein has been obtained from sources that we deem reliable, or the owner of the property. We have no reason to doubt its accuracy, but we do not guarantee it.



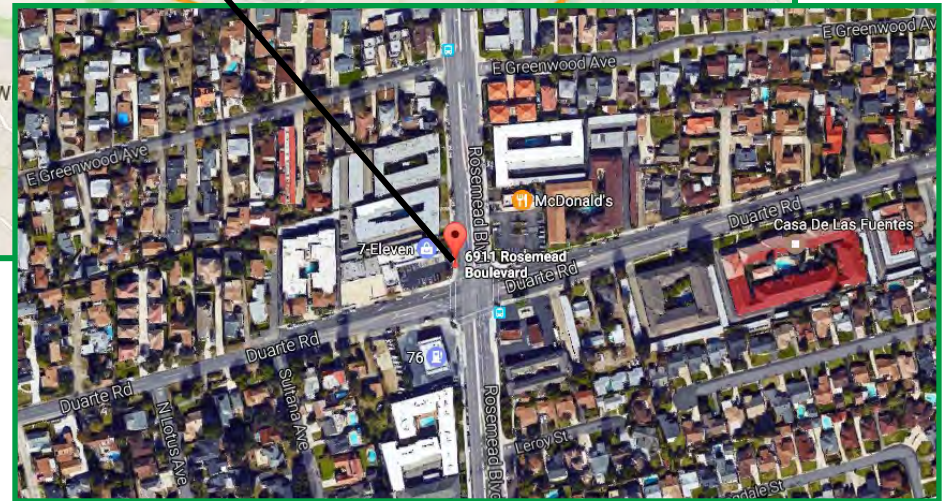
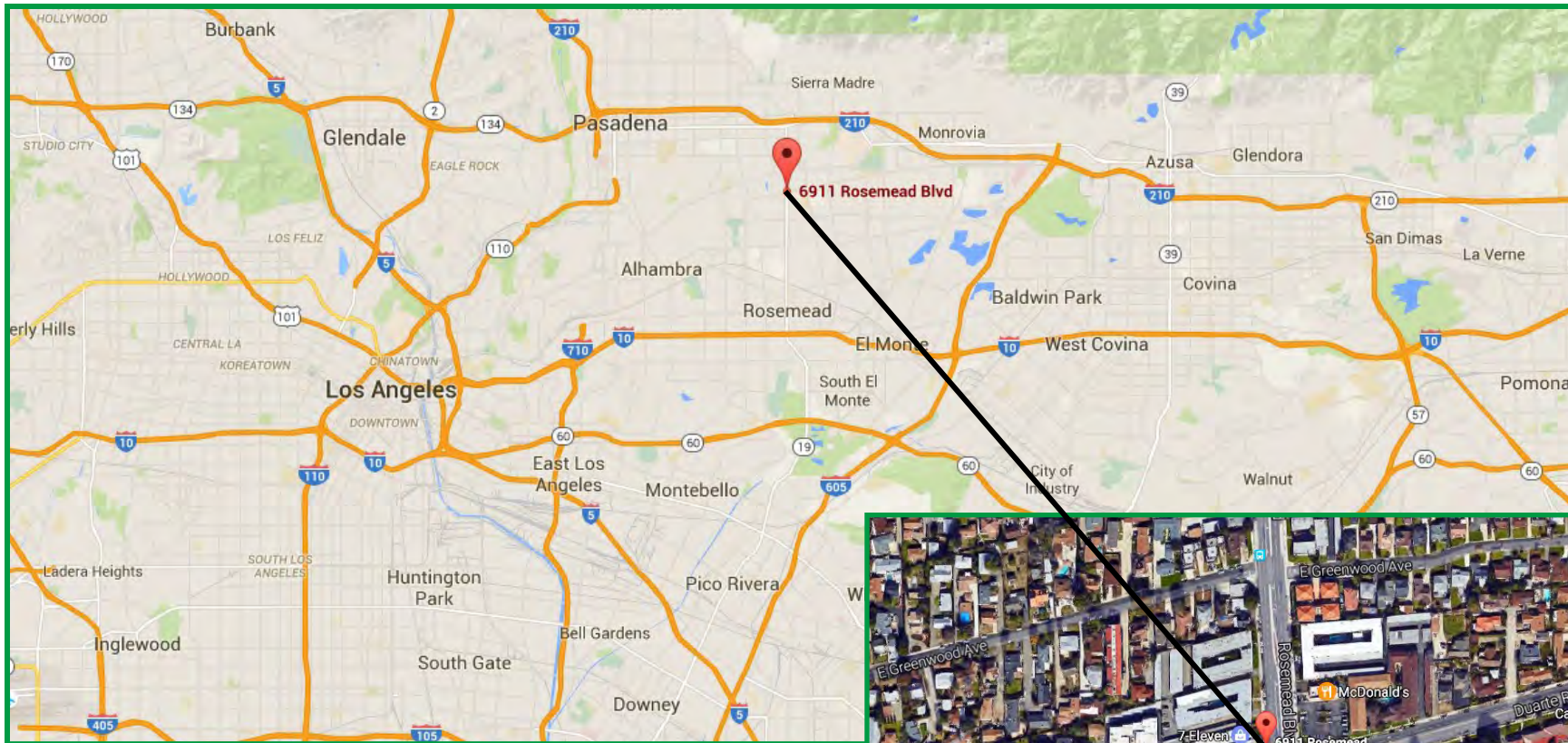


**International, Inc.**  
**BUSINESS**  
**PROPERTIES**

# RD CENTER

## FOR LEASE: NWC ROSEMEAD BLVD. & DUARTE RD

**Anchored by 7-Eleven**  
**6911 Rosemead Blvd, CA, 91775**



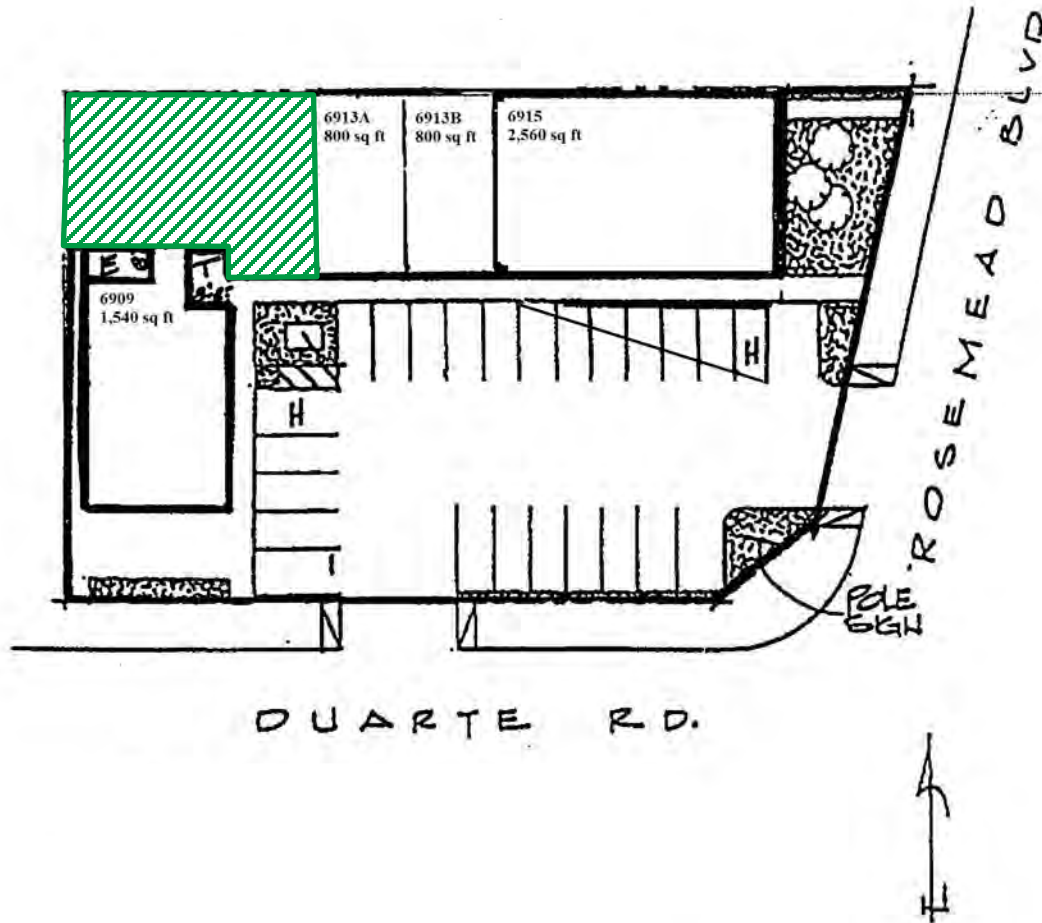


International, Inc.  
BUSINESS  
PROPERTIES

# RD CENTER

## FOR LEASE: NWC ROSEMEAD BLVD. & DUARTE RD

Anchored by 7-Eleven  
6911 Rosemead Blvd, CA, 91775



# Demographic Detail Report

## Rosemead/duarte Shopping Center

6909-6915 Rosemead Blvd, San Gabriel, CA 91775

Building Type: **General Retail**  
 Secondary: **Freestanding**  
 GLA: **7,553 SF**  
 Year Built: **1984**

Total Available: **1,853 SF**  
 % Leased: **75.47%**  
 Rent/SF/Yr: **Negotiable**



Radius	1 Mile		3 Mile		5 Mile	
<b>Population</b>						
2022 Projection	31,897		195,284		615,706	
2017 Estimate	31,020		190,064		599,126	
2010 Census	29,830		183,592		578,105	
Growth 2017 - 2022	2.83%		2.75%		2.77%	
Growth 2010 - 2017	3.99%		3.53%		3.64%	
<b>2017 Population by Age</b>						
	<b>31,020</b>		<b>190,064</b>		<b>599,126</b>	
Age 0 - 4	1,697	5.47%	10,244	5.39%	35,434	5.91%
Age 5 - 9	1,606	5.18%	9,740	5.12%	33,192	5.54%
Age 10 - 14	1,673	5.39%	10,148	5.34%	32,818	5.48%
Age 15 - 19	1,834	5.91%	11,004	5.79%	34,718	5.79%
Age 20 - 24	1,980	6.38%	11,849	6.23%	38,603	6.44%
Age 25 - 29	2,071	6.68%	12,488	6.57%	43,218	7.21%
Age 30 - 34	1,924	6.20%	11,747	6.18%	42,176	7.04%
Age 35 - 39	1,899	6.12%	11,439	6.02%	40,269	6.72%
Age 40 - 44	2,092	6.74%	12,361	6.50%	40,815	6.81%
Age 45 - 49	2,318	7.47%	13,723	7.22%	42,560	7.10%
Age 50 - 54	2,397	7.73%	14,552	7.66%	43,435	7.25%
Age 55 - 59	2,308	7.44%	14,410	7.58%	42,061	7.02%
Age 60 - 64	2,005	6.46%	12,791	6.73%	36,723	6.13%
Age 65 - 69	1,628	5.25%	10,525	5.54%	29,826	4.98%
Age 70 - 74	1,197	3.86%	7,775	4.09%	21,737	3.63%
Age 75 - 79	887	2.86%	5,715	3.01%	15,752	2.63%
Age 80 - 84	656	2.11%	4,201	2.21%	11,481	1.92%
Age 85+	850	2.74%	5,351	2.82%	14,308	2.39%
Age 65+	5,218	16.82%	33,567	17.66%	93,104	15.54%
<b>Median Age</b>	<b>42.00</b>		<b>42.60</b>		<b>39.90</b>	
<b>Average Age</b>	<b>40.90</b>		<b>41.30</b>		<b>39.70</b>	



The information contained herein has been obtained from sources that we deem reliable, or the owner of the property. We have no reason to doubt its accuracy, but we do not guarantee it. Copyrighted report licensed to BP International, Inc. - 854092.

5/1/2018



## Demographic Detail Report

### Rosemead/duarte Shopping Center

6909-6915 Rosemead Blvd, San Gabriel, CA 91775

Radius	1 Mile	3 Mile	5 Mile
<b>2017 Population By Race</b>	<b>31,020</b>	<b>190,064</b>	<b>599,126</b>
White	11,991 38.66%	83,578 43.97%	312,010 52.08%
Black	522 1.68%	3,825 2.01%	18,518 3.09%
Am. Indian & Alaskan	245 0.79%	1,520 0.80%	6,401 1.07%
Asian	17,545 56.56%	96,255 50.64%	246,555 41.15%
Hawaiian & Pacific Island	21 0.07%	211 0.11%	963 0.16%
Other	695 2.24%	4,675 2.46%	14,679 2.45%
<b>Population by Hispanic Origin</b>	<b>31,020</b>	<b>190,064</b>	<b>599,126</b>
Non-Hispanic Origin	24,817 80.00%	147,410 77.56%	398,602 66.53%
Hispanic Origin	6,202 19.99%	42,654 22.44%	200,524 33.47%
<b>2017 Median Age, Male</b>	<b>39.70</b>	<b>40.60</b>	<b>38.10</b>
<b>2017 Average Age, Male</b>	<b>39.20</b>	<b>39.90</b>	<b>38.30</b>
<b>2017 Median Age, Female</b>	<b>43.90</b>	<b>44.40</b>	<b>41.60</b>
<b>2017 Average Age, Female</b>	<b>42.30</b>	<b>42.60</b>	<b>41.00</b>
<b>2017 Population by Occupation Classification</b>	<b>25,677</b>	<b>157,727</b>	<b>490,744</b>
Civilian Employed	15,750 61.34%	93,679 59.39%	296,241 60.37%
Civilian Unemployed	516 2.01%	3,563 2.26%	14,020 2.86%
Civilian Non-Labor Force	9,411 36.65%	60,436 38.32%	180,367 36.75%
Armed Forces	0 0.00%	49 0.03%	116 0.02%
<b>Households by Marital Status</b>			
Married	5,944	36,159	101,746
Married No Children	3,094	19,847	55,429
Married w/Children	2,849	16,312	46,318
<b>2017 Population by Education</b>	<b>23,853</b>	<b>145,326</b>	<b>453,168</b>
Some High School, No Diploma	2,645 11.09%	16,754 11.53%	84,254 18.59%
High School Grad (Incl Equivalency)	4,311 18.07%	25,105 17.27%	82,059 18.11%
Some College, No Degree	5,096 21.36%	33,505 23.06%	99,745 22.01%
Associate Degree	1,622 6.80%	8,247 5.67%	28,806 6.36%
Bachelor Degree	6,522 27.34%	38,071 26.20%	97,581 21.53%
Advanced Degree	3,657 15.33%	23,644 16.27%	60,723 13.40%



The information contained herein has been obtained from sources that we deem reliable, or the owner of the property. We have no reason to doubt its accuracy, but we do not guarantee it. Copyrighted report licensed to BP International, Inc. - 854092.

5/1/2018

## Demographic Detail Report

### Rosemead/duarte Shopping Center

6909-6915 Rosemead Blvd, San Gabriel, CA 91775

Radius	1 Mile		3 Mile		5 Mile	
<b>2017 Population by Occupation</b>	<b>30,085</b>		<b>179,358</b>		<b>562,981</b>	
Real Estate & Finance	1,512	5.03%	8,091	4.51%	21,280	3.78%
Professional & Management	9,382	31.18%	56,525	31.52%	158,604	28.17%
Public Administration	671	2.23%	4,395	2.45%	12,235	2.17%
Education & Health	3,951	13.13%	22,702	12.66%	68,961	12.25%
Services	2,321	7.71%	13,660	7.62%	52,585	9.34%
Information	586	1.95%	3,076	1.72%	9,212	1.64%
Sales	4,231	14.06%	25,875	14.43%	74,987	13.32%
Transportation	796	2.65%	3,422	1.91%	13,040	2.32%
Retail	1,404	4.67%	8,853	4.94%	30,176	5.36%
Wholesale	656	2.18%	5,412	3.02%	13,891	2.47%
Manufacturing	1,266	4.21%	7,940	4.43%	28,197	5.01%
Production	904	3.00%	5,580	3.11%	28,826	5.12%
Construction	684	2.27%	3,831	2.14%	17,168	3.05%
Utilities	764	2.54%	4,403	2.45%	13,954	2.48%
Agriculture & Mining	26	0.09%	287	0.16%	1,081	0.19%
Farming, Fishing, Forestry	24	0.08%	207	0.12%	780	0.14%
Other Services	907	3.01%	5,099	2.84%	18,004	3.20%
<b>2017 Worker Travel Time to Job</b>	<b>14,939</b>		<b>88,961</b>		<b>280,853</b>	
<30 Minutes	7,429	49.73%	47,876	53.82%	149,181	53.12%
30-60 Minutes	5,370	35.95%	31,022	34.87%	100,939	35.94%
60+ Minutes	2,140	14.32%	10,063	11.31%	30,733	10.94%
<b>2010 Households by HH Size</b>	<b>10,696</b>		<b>63,861</b>		<b>196,504</b>	
1-Person Households	2,393	22.37%	13,485	21.12%	45,363	23.09%
2-Person Households	2,992	27.97%	18,386	28.79%	53,753	27.35%
3-Person Households	2,154	20.14%	12,504	19.58%	35,193	17.91%
4-Person Households	1,831	17.12%	10,807	16.92%	30,556	15.55%
5-Person Households	774	7.24%	4,851	7.60%	15,916	8.10%
6-Person Households	336	3.14%	2,185	3.42%	7,831	3.99%
7 or more Person Households	216	2.02%	1,643	2.57%	7,892	4.02%
<b>2017 Average Household Size</b>	<b>2.80</b>		<b>2.80</b>		<b>2.90</b>	
<b>Households</b>						
2022 Projection	11,387		67,709		209,248	
2017 Estimate	11,078		65,921		203,587	
2010 Census	10,696		63,860		196,505	
Growth 2017 - 2022	2.79%		2.71%		2.78%	
Growth 2010 - 2017	3.57%		3.23%		3.60%	



The information contained herein has been obtained from sources that we deem reliable, or the owner of the property. We have no reason to doubt its accuracy, but we do not guarantee it. Copyrighted report licensed to BP International, Inc. - 854092.

5/1/2018

## Demographic Detail Report

### Rosemead/duarte Shopping Center

6909-6915 Rosemead Blvd, San Gabriel, CA 91775

Radius	1 Mile		3 Mile		5 Mile	
<b>2017 Households by HH Income</b>	<b>11,077</b>		<b>65,922</b>		<b>203,587</b>	
<\$25,000	1,857	16.76%	10,367	15.73%	38,694	19.01%
\$25,000 - \$50,000	2,068	18.67%	11,371	17.25%	40,590	19.94%
\$50,000 - \$75,000	1,606	14.50%	10,156	15.41%	32,441	15.93%
\$75,000 - \$100,000	1,465	13.23%	8,454	12.82%	24,805	12.18%
\$100,000 - \$125,000	1,183	10.68%	6,857	10.40%	20,087	9.87%
\$125,000 - \$150,000	817	7.38%	4,491	6.81%	12,552	6.17%
\$150,000 - \$200,000	1,119	10.10%	6,464	9.81%	15,524	7.63%
\$200,000+	962	8.68%	7,762	11.77%	18,894	9.28%
<b>2017 Avg Household Income</b>	<b>\$96,816</b>		<b>\$104,216</b>		<b>\$92,427</b>	
<b>2017 Med Household Income</b>	<b>\$75,128</b>		<b>\$78,155</b>		<b>\$67,069</b>	
<b>2017 Occupied Housing</b>	<b>11,079</b>		<b>65,921</b>		<b>203,587</b>	
Owner Occupied	5,745	51.85%	39,425	59.81%	99,800	49.02%
Renter Occupied	5,334	48.15%	26,496	40.19%	103,787	50.98%
<b>2010 Housing Units</b>	<b>11,354</b>		<b>67,900</b>		<b>208,948</b>	
1 Unit	7,384	65.03%	50,429	74.27%	134,740	64.48%
2 - 4 Units	435	3.83%	3,373	4.97%	14,689	7.03%
5 - 19 Units	1,556	13.70%	7,764	11.43%	30,492	14.59%
20+ Units	1,979	17.43%	6,334	9.33%	29,027	13.89%
<b>2017 Housing Value</b>	<b>5,745</b>		<b>39,427</b>		<b>99,799</b>	
<\$100,000	29	0.50%	280	0.71%	1,106	1.11%
\$100,000 - \$200,000	4	0.07%	62	0.16%	256	0.26%
\$200,000 - \$300,000	31	0.54%	303	0.77%	2,059	2.06%
\$300,000 - \$400,000	166	2.89%	1,515	3.84%	8,401	8.42%
\$400,000 - \$500,000	639	11.12%	4,105	10.41%	16,493	16.53%
\$500,000 - \$1,000,000	4,021	69.99%	23,229	58.92%	52,356	52.46%
\$1,000,000+	855	14.88%	9,933	25.19%	19,128	19.17%
<b>2017 Median Home Value</b>	<b>\$749,129</b>		<b>\$789,476</b>		<b>\$706,132</b>	
<b>2017 Housing Units by Yr Built</b>	<b>11,369</b>		<b>68,086</b>		<b>210,832</b>	
Built 2010+	289	2.54%	1,705	2.50%	5,484	2.60%
Built 2000 - 2010	472	4.15%	2,738	4.02%	11,043	5.24%
Built 1990 - 1999	619	5.44%	3,419	5.02%	10,915	5.18%
Built 1980 - 1989	878	7.72%	4,968	7.30%	19,373	9.19%
Built 1970 - 1979	1,628	14.32%	7,344	10.79%	24,188	11.47%
Built 1960 - 1969	2,150	18.91%	10,010	14.70%	29,833	14.15%
Built 1950 - 1959	2,566	22.57%	15,994	23.49%	41,547	19.71%
Built <1949	2,767	24.34%	21,908	32.18%	68,449	32.47%
<b>2017 Median Year Built</b>	<b>1961</b>		<b>1957</b>		<b>1958</b>	



The information contained herein has been obtained from sources that we deem reliable, or the owner of the property. We have no reason to doubt its accuracy, but we do not guarantee it. Copyrighted report licensed to BP International, Inc. - 854092.

5/1/2018